

LUXURY VINYL GENERAL INSTALLATION INSTRUCTIONS FOR DRYBACK FLOORING

WARNING

Prior to installation, please ensure that the product received is the correct style and color as well as to the customer's satisfaction. If there are any doubts, do not install the flooring and contact the retailer. Beaulieu Canada[®] will not be held responsible for any costs relating to the installation of unsatisfactory or incorrect product.

ACCLIMATION

Acclimation is a required procedure prior to the installation of Luxury Vinyl Flooring (LVF). Store the UNOPENED BOXES in the room where the flooring is to be installed for at least 48 hours prior to installation. Always store the boxes on a flat and level surface; never store the boxes on their sides. Heating and air conditioning should be operational and set between 65 °F - 85 °F (18.3 °C - 29.4 °C) for the acclimation and installation period.

REQUIRED ADHESIVE

Pressure sensitive quality acrylic-based adhesive. Beaulieu Canada highly recommends using Peerless Contract 701 Vinyl Flooring Adhesive or Beauflor 4N1 or MAPEI Ultrabond ECO 360 if the Peerless Contract adhesive is not available. PLEASE FOLLOW THE INSTRUCTIONS LISTED ON THE CONTAINER OF THE ADHESIVE, INCLUDING THE USE OF A SUITABLE TROWEL.

RECOMMENDED TOOLS AND MATERIALS

- Safety glasses
- Measuring tape
- Square
- Floor roller
- Utility knife
- Straight edge
- Chalk line
- Fine felt pen
- Trowel (as per adhesive container's recommendations)
- Primer (if necessary)
- Vinyl plank/tile cutter (optional)
- Acetone (if necessary)
- Embossing leveler/floor patch (if necessary)

Note: Depending on the required floor preparation, other materials required may include: cement-based floor patching compound and trowel, embossing leveler, scraper, sander or grinder.

SUITABLE SUBSTRATES

Beaulieu Canada LVF can be installed over many floors. All carpeting and padding need to be removed. Make sure that the surface is clean, dry, structurally sound and flat within 3/16" per 10 foot radius or 1/8" per 6 foot radius (4.7 mm per 3 m or 3.2 mm per 1.8 m). Supporting floors must be rigid as too much deflection can result in a failed installation. Maximum deflection should not exceed 3/64" (1.1 mm).

Beaulieu Canada LVF should not be installed over plank floors, cushioned-backed vinyl flooring, asphalt-based floors, carpet, self-adhering plank or tile, laminate or other floating flooring or structurally-damaged concrete; concrete should be free from dust, solvents, paint, wax, grease, oil, sealing compounds or curing agents.

CONCRETE SUBSTRATES

Concrete subfloors must be inspected prior to installation and if they do not meet the following requirements, do not install flooring. Concrete shall have a minimum compressive strength of 3500 psi. Concrete subfloors must be cured for 60 days prior to installation of the flooring, and should be tested for excessive moisture. Moisture vapor emission rate should not exceed 5 lb/1000 sq. ft. (2.27 kg/92.9 sq. m)/24 hours per ASTM F1869. When using the ASTM F2170 test method, the internal relative humidity should not exceed 80%, and the pH level should be between 7 and 9.

WOODEN SUBSTRATES

Wood floors should be a minimum of 3/4" (19 mm) thick, APA approved grade tongue and groove plywood. If the wooden subfloor is not an APA approved flooring grade underlayment, a minimum of 1/4" (6.35 mm) approved wood underlayment must be adhered to the existing substrate. Make sure that the surface is clean, dry, structurally sound and flat within 3/16" per 10 foot radius (4.7 mm per 3 m). All fastener indentations and joints should be level and smooth using appropriate patching compounds. Deflection should not exceed 3/64" (1.1 mm).

EXISTING RESILIENT FLOORS

When installing Beaulieu Canada LVF over existing resilient flooring, ensure that the existing sheet good or tile product is in good condition, that it was installed in the full spread glue method and is properly secured. Beaulieu Canada LVF can be installed over one layer of non-cushioned sheet good flooring. Existing tile or sheet resilient floorings should be stripped using a product that is an appropriate stripper for vinyl to remove wax or other contamination, rinsed with clear water and allowed to dry. Very smooth or high-gloss floors need to be lightly abraded to rough up the surface to allow proper adhesive bonding.

GYPSUM FLOORS

Beaulieu Canada LVF can be installed over flooring grade gypsum subfloors when properly installed following the adhesive manufacturer's installation instructions. It should be noted that gypsum subfloors are very porous and are required to be primed following the adhesive manufacturer's installation instructions. The subfloor should be structurally sound and flat within 3/16" per 10 foot radius (4.7 mm per 3 m).

MARBLE, QUARRY TILE, TERRAZZO, CERAMIC TILE

Properly cleanse substrate using a commercial degreasing/dewaxing solution. Grind or abrade any highly polished or irregular surfaces. Fill any low areas, chips and grout joints that may telegraph through the new flooring. Test for porosity and use the appropriate adhesive application method. Bond tests are required.

RADIANT-HEATED FLOORS

Beaulieu Canada LVF can be installed over embedded radiant-heated floors provided the operating temperature never exceeds 85 °F (29.4 °C). The radiant system should be in operation for three (3) weeks prior to installation of the flooring. For 48 hours prior to and during installation, the system should be kept at 65 °F (18.3 °C). It should be noted that when using adhesive, flash off time may be decreased due to operation of the radiant heat flooring system. Once the installation is completed, the heat should be

gradually increased by a maximum of 5 °F (2.8 °C) per day until the desired setting is reached. Do not use radiant heat systems that expose the flooring to wide variations in temperature, such as a wire induction mat system. The installation area of the flooring shall not contain heated and non-heated areas, unless expansion joints separate them. Keep in mind that loose rugs or carpets may accidentally function as heat insulators and raise the temperature to more than the tolerated maximum surface temperature of 85 °F (29.4 °C).

JOB SITE CONDITIONS/SUBSTRATE PREPARATION

- Room temperature must be maintained between 65 °F (18.3 °C) and 85 °F (29.4 °C) at all times.
- Substrate should be free of dust, debris from paint, varnish, wax, oils, curing sealers, solvents and other foreign matter. Any adhesive residue from prior installations should be completely removed.
- Any looseness of the substrate should be secured.
- High spots should be levelled and low spots should be filled with a proper material to ensure substrate is flat within 3/16" per 10 foot radius (4.7 mm per 3 m).
- All construction seams, expansion joints, and holes should be filled level with the surrounding surface to eliminate telegraphing of such irregularities.
- Beaulieu Canada recommends the use of floor primers on all porous substrates.

Caution: If you plan to remove old resilient flooring material or any type of old adhesive, please be aware that it may contain asbestos fibers or crystalline silica; therefore, avoid creating dust. Inhalation of such dust is a cancer and respiratory tract hazard and local regulations may require professional removal. Instructions for the removal of old flooring materials and adhesives may be found in the RFCI Recommended Work Practices for Removal of Resilient Floor Coverings. You may contact the Resilient Floor Covering Institute at 706-882-3833 or www.rfci.com.

PATCHING AND LEVELING

Use only cement-based patching and leveling compounds. Check with patching and leveling compound manufacturer for curing times. Check moisture levels before starting installation to ensure moisture levels are within guidelines as outlined in the "Concrete Substrates" paragraph.

Note: Priming the substrate or adding latex to levelers will normally make the floors NON-POROUS. Test for porosity and use the non-porous adhesive instructions if necessary.

The contractor or owner is responsible for cure time, moisture content testing, and the structural integrity of any leveling or patching compound used.

EMBOSSING LEVELER

When installing over an existing resilient flooring material, an embossing leveler may be required to prevent the existing material pattern from telegraphing through the new material.

PRIOR TO INSTALLATION

- Cartons should be stored horizontally at all times.
- Protect carton corners from damage.
- Inspect all planks/tiles for visible defects and damage before and during installation. Do not install damaged planks/tiles. Beaulieu Canada will not accept responsibility for claims on flooring installed with visible defects. During installation, inspect the groove area and remove any debris that may prevent proper assembly of planks/tiles.
- Beaulieu Canada LVF is production-run sensitive. Ensure that all planks/tiles you are installing come from the same production run. Beaulieu Canada cannot guarantee that any future replacement or additional installation will match the originally-installed product.
- Ensure that all boxes are of the correct product and when installing, open several boxes at a time and mix planks/tiles from different boxes for best results and overall look.
- Room temperature should be no less than 65 °F (18.3 °C) for 48 hours before, during and after installation.
- Beaulieu Canada LVF is intended for indoor use only.
- Determine in which direction the planks/tiles will be installed. It is recommended that the flooring be installed running parallel to the longest wall.

COMMERCIAL INSTALLATION

All commercial installations require approval by a Beaulieu Canada sales representative. Contact your Beaulieu Canada retailer for further details.

IMPORTANT INFORMATION FOR TILE COLLECTION SKYLINE, COLOR 2115 VANCOUVER ONLY

The Skyline style 2115 Vancouver has a great design. However, please note that there is a grout line on one long side and one short side of each tile only. The grout line is not present on all four sides. It is important to install the tiles with the proper orientation to align all grout lines correctly and create the most optimal pattern repeat.

INSTALLATION

1. Remove thresholds and baseboards before you measure the room to calculate how much flooring to purchase. Your surface to cover will be the length times the width of the room, plus the area of any nooks and closets. To this total surface, you will need to add 5-10% for trimming. Beaulieu Canada recommends to keep a few planks/tiles for replacement should any planks/tiles become damaged.
2. Remove the existing flooring if necessary. If the existing floor surface is solid and smooth, you may choose to skip this step. If you remove carpet or old vinyl, you may need to use a power scraper to remove old adhesive without omitting corners and crevices.
3. Use a patching compound to fill in any cracks and holes in your subfloor. Work the compound into the hole with a putty knife and level it off. Once you have a smooth, even surface, sweep or vacuum the subfloor thoroughly.
4. Planks/tiles are to be installed parallel to the wall that is the main line of sight in the room (usually this is the wall opposite to the room's main entrance). Measure to determine the center of the room and adjust the center point so that planks/tiles are evenly distributed on each side. Mark this straight center line on the floor using a chalk line or fine felt pen. Planks/tiles on first and last rows may need to be cut to ensure even layout throughout the room.

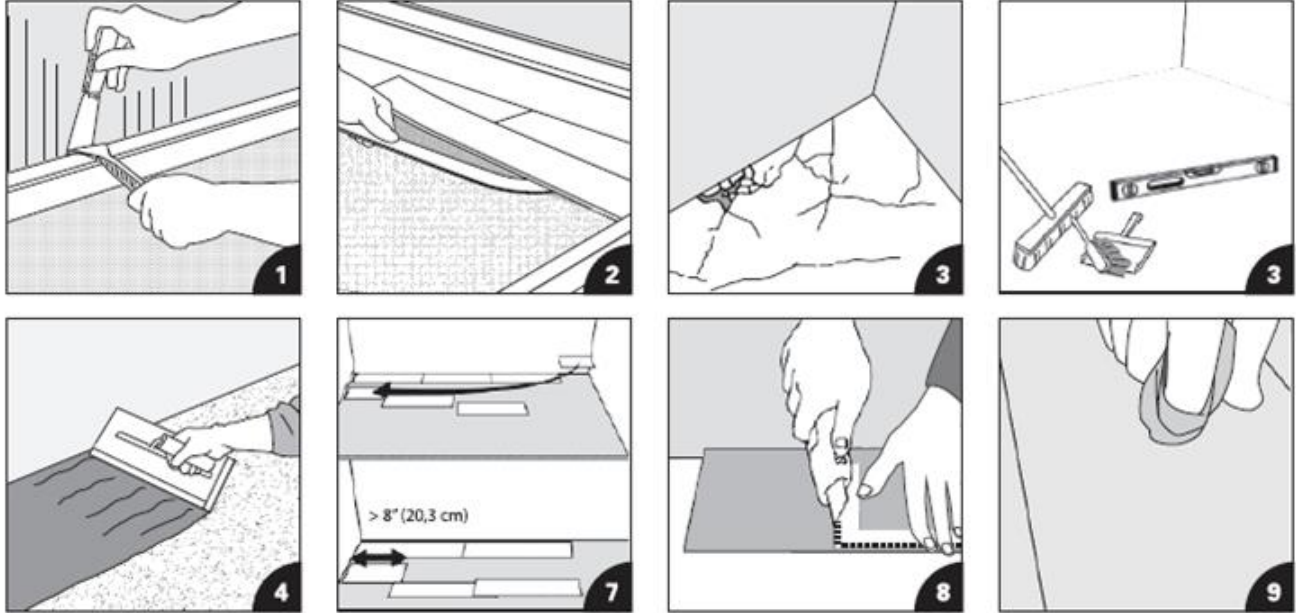
5. Make sure to apply the adhesive only when you are ready to install the planks/tiles, using the proper trowel size and following the adhesive working time as outlined on the adhesive manufacturer's installation instructions.
6. Starting from one corner of the room, lay down the first row of planks/tiles moving towards the other wall. Since these planks/tiles do not have any particular direction, they can be installed either from left to right or from right to left.
7. When placing the second row and every subsequent row, make sure to stagger the end joints a minimum of 8" (20 cm) apart from the previous row. Staggering the planks/tiles creates a more authentic appearance. In order to accomplish this, you may need to cut a plank/tile to start a row. Ends that have been cut should be placed against the wall. Use a vinyl plank/tile cutter (recommended) or a utility knife and square to cut the plank/tile at a 90-degree angle to its length. Planks/tiles that are against the wall also need to be a minimum 8" (20 cm) in length. Make sure there are no gaps between the planks/tiles; they should be fitted tight to each other on all four (4) edges. Once the planks/tiles have been installed, use a floor roller to ensure all the planks/tiles are firmly bonded to the floor. Rolling should take place during the working time of the adhesive (see adhesive label).
8. To remove any adhesive residues on the surface of the floor, use a clean white cloth dampened with water if adhesive is wet and acetone, denatured alcohol or mineral spirit if adhesive is dry.

IMPORTANT

- Beaulieu Canada LVF is intended for indoor use only.
- Beaulieu Canada LVF is warranted as a floor covering only.
- Post-installation temperature should be maintained between 65 °F - 85 °F (18.3 °C - 29.4 °C). Relative humidity should be maintained between 40% and 70%.
- **Luxury vinyl flooring must be protected from direct sunlight exposure. Beaulieu Canada recommends using UV protective film, blinds or curtains in all windows that provide direct sunlight to ensure that the products are not overheated.** Luxury vinyl floor coverings exposed to excessive heat are subject to thermal expansion which may lead to buckling or peaking. Beaulieu Canada will not be held liable for any claims or damages arising out of or related to the failure of the installation when the flooring is exposed to direct sunlight.

Follow the Beaulieu Canada Care and Maintenance Guidelines to properly care for your flooring. These can be found on our website at beaulieucanada.com, or you may contact your Beaulieu Canada retailer.

INSTALLATION ILLUSTRATIONS



Homeowner Obligations

To maintain warranty coverage and ensure fast and easy warranty service, the homeowner is responsible for the following:

- Keep five (5) planks/tiles of the LVF product after installation for testing purposes.
- Keep and be able to provide the original sales receipt or documentation illustrating proof of purchase and installation date of the product.
- Make sure the flooring is installed according to Beaulieu Canada Installation Instructions.
- Keep a list of cleaners used to maintain the flooring.

Please visit our website at beaulieucanada.com for the most up-to-date version of this document as it may have been revised and updated since this printed version.

Wall installation instructions, warranty, as well as care and maintenance can also be found on our website at beaulieucanada.com, or you may contact your retailer.

09.2022